

1. DESCRIPTION OF WORKS AND PHOTOGRAPHIC REPORT

Listed below are all the works carried out by **3RS GESTIÓN** for the Urban Solid Waste Collection Service, Street Cleaning and Maintenance of the Green Areas of the urban entity "Hacienda del Álamo Golf Resort", in **NOVEMBER 2025**.

1.1. MUNICIPAL SOLID WASTE WORKS

Replacement work on two (2) glass containers in Phase 1 (C/ Germany) and in Phase 6 (C/ Georgia); due to breakage caused by their poor condition:



Resolution of an ACT OF VANDALISM due to the appearance of a large quantity of bulky waste and belongings deposited outside the Maintenance Zone. The EUC and SECURITY have been notified.



INCIDENT resolution regarding the disappearance of the "Out of Service" seals and signs that had been placed the previous month on the underground containers for the residual waste fraction in Phase 8 Pueblo Español:



Before (west side)



Before (north side)



Before (east side)



Before (south side)



Pre-resolution state (east side)



Newly sealed (east side)



State prior to resolution (north side)



Newly sealed (north side)



Newly sealed (west side)



Newly sealed (south side)

1.2. STREET CLEANING WORKS

Manual cleaning work of soil runoff caused by heavy rain on the bike lane of the Main Road, from the Phase 6 roundabout (Olivos) to the Phase 1 roundabout (EUM)



Before



Before



Before

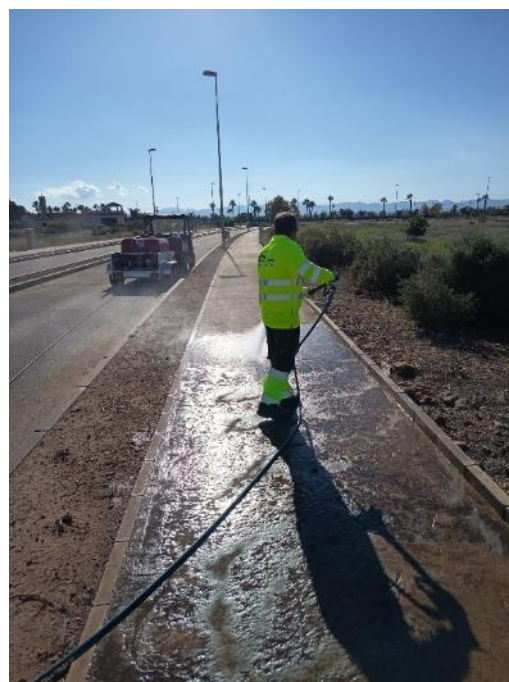


After

Cleaning and disinfection work on sidewalks, roads and storm drains in UA4, following the clearing and chemical weeding work:



Paseo de La Habana



Paseo de Puerto Rico

1.3. GARDENING WORKS

Trimming, weeding, and cleaning in Rambla Mediterránea Park (Phase 7 Oasis):
CONTINUED





Weeding of the right-hand sidewalk section from EUM to the practice field (including the park):





Phytosanitary treatments against weeds:

TERMINATION



Phase 6 Olivos



C/ Vistas al Green



C/ Lituania



Rotonda Grava Negra



Parque Italiano



Parque Rambla Mediterránea

Weeding and trimming of hedges and ficus trees along the main road from EUM to the Clubhouse (right/left):



Weeding and trimming of hedges and ficus trees along the main road from the Clubhouse to the black gravel roundabout (right/left):



Weeding and trimming of hedges and ficus trees along the main road from the entrance to the EUM (right/left)





Weeding and trimming of hedge and ficus trees along the main road from the entrance to the EUM (median).





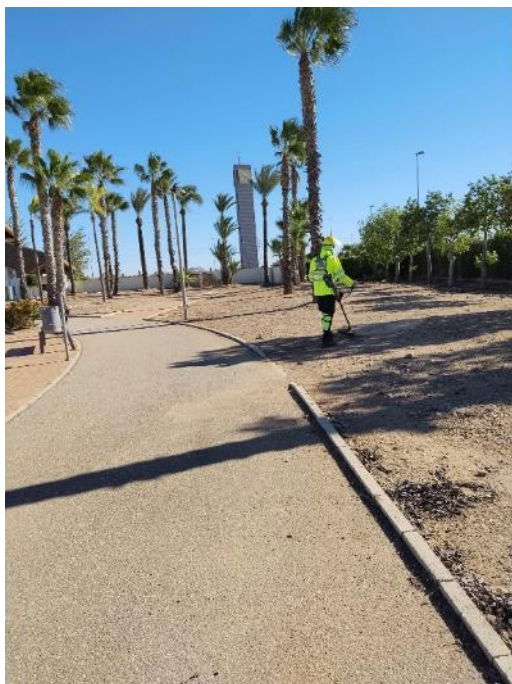
Weeding completion of UA4 (Panama, Paraguay, Noruega and Nigeria streets)





Weeding and cleaning in the back garden of the guardhouse:







Desbroce y limpieza de cuneta y rotonda exterior en Camino del Escobar:

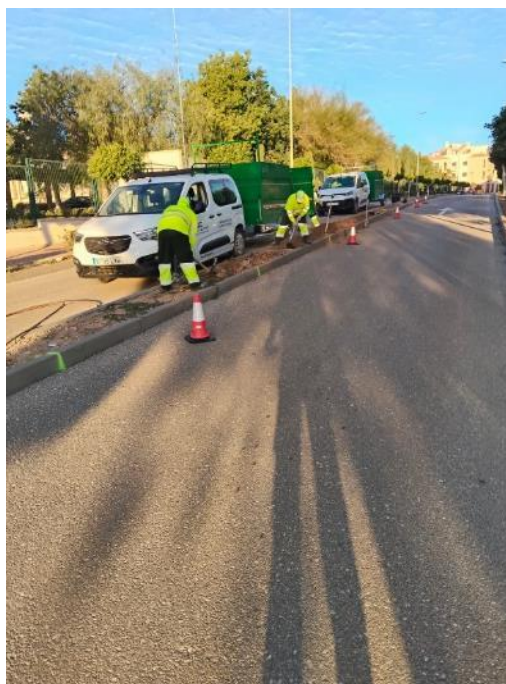


Mowing of the entrance lawn, the garden pictures, the entrance roundabout, the Phase 6 roundabout, and the roundabout next to the Multipurpose Building (MPB):



Medium preparation of entrance to a Pueblo Español for a new plantation:





Review of the irrigation network, opening manholes and checking controllers, solenoid valves, and emission points, detecting and repairing each of the incidents detected at the following locations:



Main road right, maintenance height (0,5 ml PE Ø32 and 2 links)



Back Garden Phase 6 (T Ø16 mm)



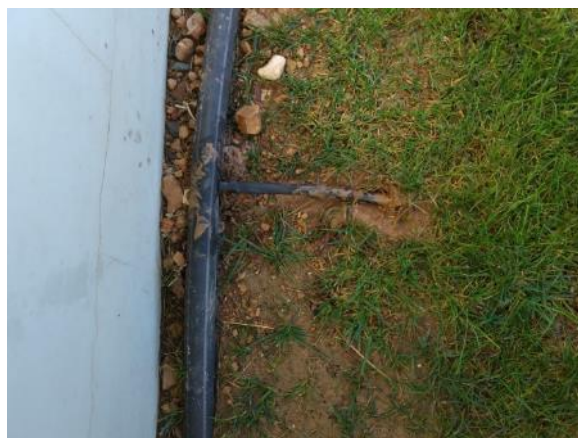
Back Garden Phase 6 (0,5 ml PE Ø32 y 2 links)



Back Garden Phase 6 (T Ø16 mm)



Garden by squares (T Ø16 mm)



Garden by squares (0,5 ml PE Ø16 y 1 link)



**Phase 6 groundabout (change programmer
Solem 4 stations and 1 solenoid valve 1")**



**Phase 6 groundabout (change programmer
Solem 4 stations and 1 solenoid valve 1")**



**Phase 6 groundabout (change programmer
Solem 4 stations and 1 solenoid valve 1")**



**Phase 1 groundabout (change programmer
Solem 4 stations)**



**Phase 1 groundabout (change programmer
Solem 4 stations)**



**Back garden Phase 6 (5 breaks in PE Ø16-
links)**



Back garden Phase 6 (5 breaks in PE Ø16-links)



Back garden Phase 6 (5 breaks in PE Ø16-links)



Back garden Phase 6 (5 breaks in PE Ø16-links)



Back garden Phase 6 (5 breaks in PE Ø16-links)



Main road median (4 breaks in PE Ø16-links)



Main road median (4 breaks in PE Ø16-links)



Main road, left side (9 breaks in PE Ø16 - pipe and 2 links)



Main road, left side (9 breaks in PE Ø16 - pipe and 2 links)



Main road, left side (9 breaks in PE Ø16 - pipe and 2 links)



Main road, left side (9 breaks in PE Ø16 - pipe and 2 links)



Main left road. Sales Office (dripper change)



Main road, left side (battery change)



Main road right, near hotel (valve change)



Main road right, near hotel (valve change)



Italian Park Breakage Warning EUC (0,5 ml PE Ø16 and 2 links)



Italian Park Breakage Warning EUC (0,5 ml PE Ø16 and 2 links)



Rotonda C/ Bahamas (0,5 ml PE Ø16 y 1 enlace)



Roundabout C/ Bahamas (0.5 ml PE Ø16 and 1 link)



**C/ Bélgica 11 warning to security guards
(link)**



**Final roundabout C/ Bahamas (broken
RainBird programmer change for used
Solem)**



**C/ Bélgica 11 – front of mailboxes (double
battery change)**



**Black Gravel Roundabout - ext. ficus (28
drippers change)**



**Main right-hand road in front of hotel
(change of broken Solem programmer with
new Solem)**



**Pueblo Español Entrance - left drain box
(battery change)**



EUM roundabout (2 ml PE Ø16 y 2 links)



EUM roundabout (2 ml PE Ø16 y 2 links)



Main road right next to Golf School (replace broken RainBird programmer with a new Solem)



Main road right next to football field (replace broken RainBird programmer with a new Solem)



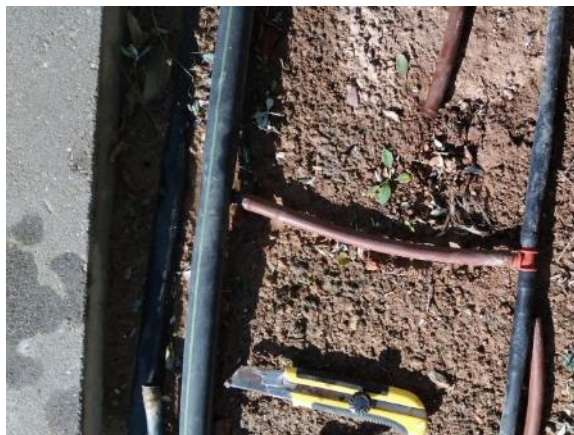
Main road, right, in front of the hotel (battery change)



Phase 6 Roundabout (new Solem programmer not working; change with another) **NOT ACCOUNTING**



Main median in front of football field (1 ml PE Ø32 and 1 link)



Main median in front of football field (0,5 ml PE Ø16 and 1 link)