

## 1. DESCRIPTION OF WORKS AND PHOTOGRAPHIC REPORT

Listed below are all the works carried out by **3RS GESTIÓN** for the Urban Solid Waste Collection Service, Street Cleaning and Maintenance of the Green Areas of the urban entity "Hacienda del Álamo Golf Resort", in **DECEMBER 2025**.

### 1.1. MUNICIPAL SOLID WASTE WORKS

Resolution of an **ACT OF VANDALISM** for the disappearance of a general waste container on Alemania Street, which was found in front of a house on Alaska Street. The homeowner was caught red-handed dumping all kinds of waste, including construction debris. The EUC and SECURITY have been informed.



Alemania St.



Alaska St.



**Debris**



**Waste mixture**

**Resolution of an ACT OF VANDALISM caused by the appearance of pruning debris at the end of Bahamas Street. The EUC and SECURITY have been informed.**





## 1.2. STREET CLEANING WORKS

Manual cleaning work of soil erosion caused by runoff during heavy rains in Paseo Alameda (Phase 7)



Before



After



Before

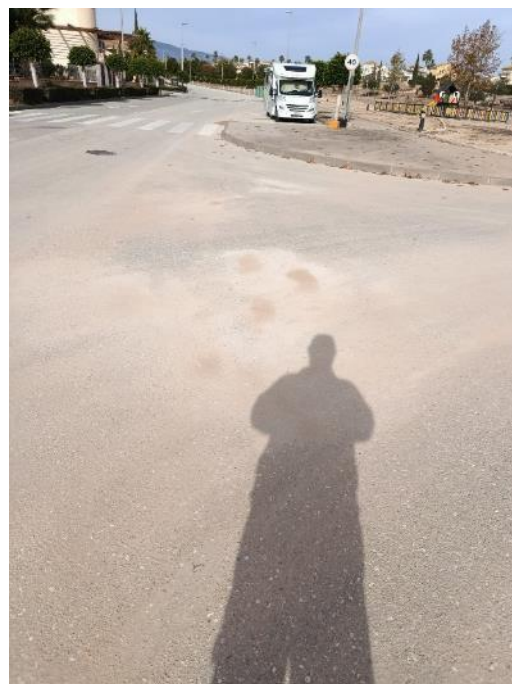


After





**Before**

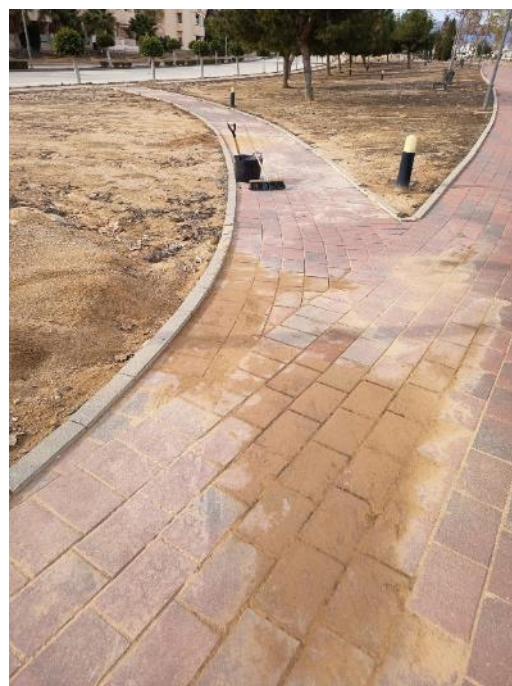


**After**

**Manual cleaning work of soil erosion caused by runoff during heavy rains in Parque Rambla Mediterránea:**



**Before**



**After**



**Before**



**After**



### 1.3. GARDENING WORKS

Landscape restoration of the median strip at the entrance to Pueblo Español by installing a geotextile anti-weed sheet, a new irrigation line with 2 drippers per plant, incorporation of a layer of red volcanic gravel and planting of 29 units of *Teucrium fruticans* size C-28.







**Weeding and trimming of hedges along the median of the main road from the Entrance to the Black Gravel Roundabout**







**Weeding and trimming of hedges and ficus trees in Phase 1 - Paseo Alameda (right/left)**





**Weeding and trimming of hedges and ficus trees in Phase 1 - Austria and Alemania St.**



**Weeding and trimming of hedge and ficus trees in Phase 2 - Belgium St. (right/left)**





**Weeding and trimming of hedges and ficus trees in Phase 8 (Pueblo Español) - Calabardina St.**



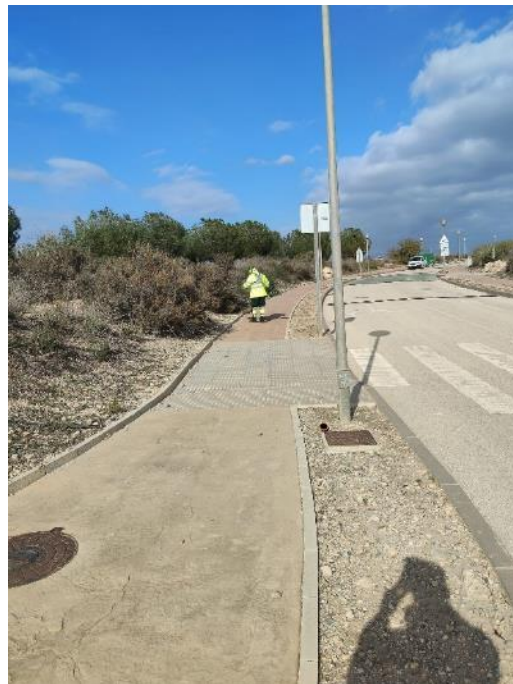
**Weeding and trimming of hedges and ficus trees in Phase 8 (Pueblo Español) - Lituania St.**







**Weeding of vegetation on the roadway, sidewalks and interior of undeveloped plots on Hungría St. (COMPLETION)**



**Weeding and trimming of hedges and ficus trees in Phase 7 - Paseo Alameda (right/left)**





**Weeding of the left-hand sidewalk section from the Maintenance Zone to the Entrance Roundabout**













Christmas flower planting in the entrance roundabout. Removal of existing plants, addition of organic matter, tilling, and new Christmas planting consisting of red poinsettias and a border of white cyclamen.





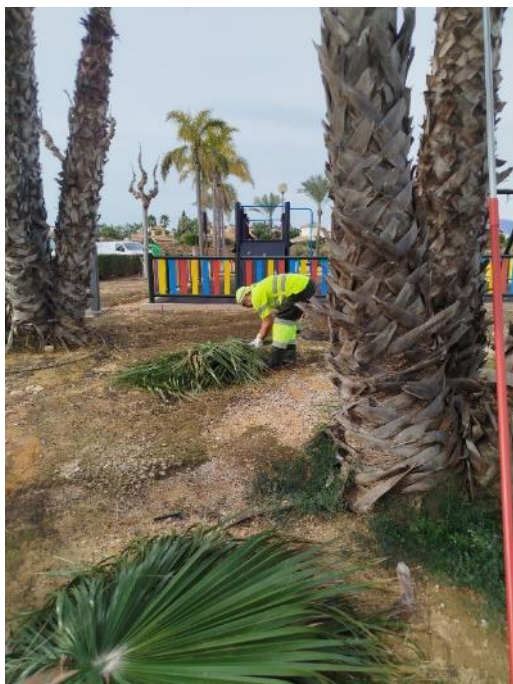


**Christmas flower planting in the Club House roundabout. Addition of organic matter, tilling, and new Christmas planting consisting of red poinsettias and a white cyclamen**





**Pruning Washingtonia palm trees 1-3 meters tall in EUM**









Review of the irrigation network, opening manholes and checking controllers, solenoid valves, and emission points, detecting and repairing each of the incidents detected at the following locations:



Main Road left near the hotel (change solenoid valve 1")



Main Road left near the hotel (change solenoid valve 1")



Phase 8 entrance road (irrigation line replacement)



Phase 8 entrance road (irrigation line replacement)

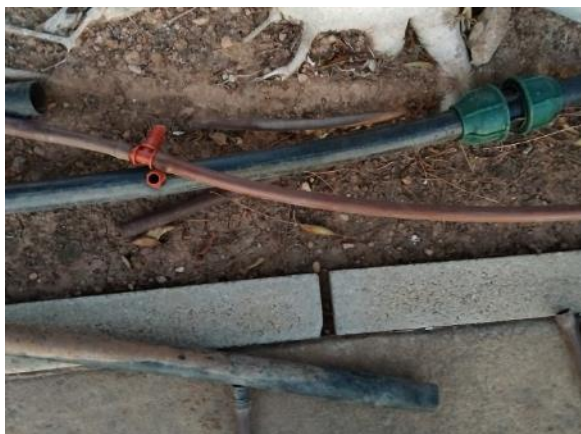




**Garden Security (1 ml PE Ø16 and 1 T link)**



**Square Garden - before Mailboxes Phase 6  
(battery change)**



**Main Road left near the hotel (1 ml PE Ø16 y  
1 link T)**



**Canadá St. near parking 1 (1 ml PE Ø16 y 1  
elbow)**



**Bélgica St, 5 (0,5 ml PE Ø32 y 2 links)**



**Bélgica St, 19 (4 ml PE Ø32 y 2 links)**





**Bélgica St, 28 (1 ml PE Ø16 y 2 links)**



**Opposite Bélgica St, 19 (change programmer Solem 1 station)**



**Main road left. Between Sales Booth and Clubhouse (16 ml PE Ø16 y 2 links)**



**Main road left. Between Sales Booth and Clubhouse (16 ml PE Ø16 y 2 links)**



**Main road left. Between Sales Booth and Clubhouse (16 ml PE Ø16 y 2 links)**



**Main road left. Between Sales Booth and Clubhouse (16 ml PE Ø16 y 2 links)**





**Phase 6 Zone B - Various repairs (4 ml PE Ø16 and 8 links)**



**Phase 6 Zone B - Various repairs (4 ml PE Ø16 and 8 links)**



**Phase 6 Zone B - Various repairs (4 ml PE Ø16 and 8 links)**



**Phase 6 Zone B - Various repairs (4 ml PE Ø16 and 8 links)**



**Phase 2 - Belgium St. Num. 21-1 and 40-2 (400 ml PE Ø16 and 6 links)**



**Phase 2 - Belgium St. Num. 21-1 and 40-2 (400 ml PE Ø16 and 6 links)**





**Phase 2 - Belgium St. Num. 21-1 and 40-2  
(400 ml PE Ø16 and 6 links)**



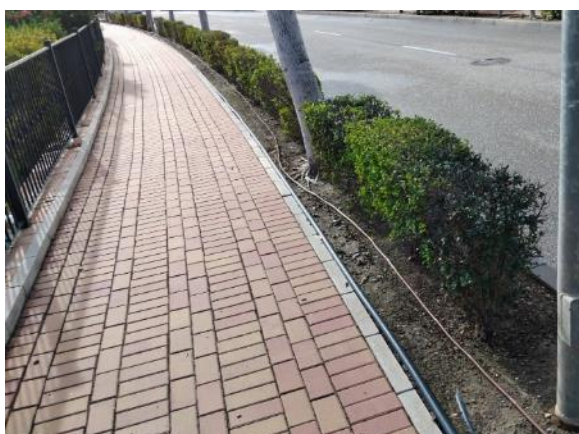
**Phase 1 - Austria St. Num. 5-7  
(35 ml PE Ø16 and 2 links)**



**Phase 1 - Austria St. Num. 5-7  
(35 ml PE Ø16 and 2 links)**



**Phase 1 - Austria St. Num. 5-7  
(35 ml PE Ø16 and 2 links)**



**Phase 2 - Bélgica St. Num. 29-21, 64-40 y 72-64 (930 ml PE Ø16 and 37 links)**



**Phase 2 - Bélgica St. Num. 29-21, 64-40 y 72-64 (930 ml PE Ø16 and 37 links)**





Phase 2 - Bélgica St. Num. 29-21, 64-40 y 72-64 (930 ml PE Ø16 and 37 links)



Phase 2 - Bélgica St. Num. 29-21, 64-40 y 72-64 (930 ml PE Ø16 and 37 links)



Phase 2 - Bélgica St. Num. 29-21, 64-40 y 72-64 (930 ml PE Ø16 and 37 links)



Phase 2 - Bélgica St. Num. 29-21, 64-40 y 72-64 (930 ml PE Ø16 and 37 links)



Phase 2 - Bélgica St. Num. 29-21, 64-40 y 72-64 (930 ml PE Ø16 and 37 links)



Phase 2 - Bélgica St. Num. 29-21, 64-40 y 72-64 (930 ml PE Ø16 and 37 links)





Phase 2 - Bahamas St. Num. 50-48, 48-28 and 28-10 (240 ml PE Ø16 and 12 links)



Phase 2 - Bahamas St. Num. 50-48, 48-28 and 28-10 (240 ml PE Ø16 and 12 links)



Phase 2 - Bahamas St. Num. 50-48, 48-28 and 28-10 (240 ml PE Ø16 and 12 links)



Phase 2 - Bahamas St. Num. 50-48, 48-28 and 28-10 (240 ml PE Ø16 and 12 links)



Phase 2 - Bahamas St. Num. 50-48, 48-28 and 28-10 (240 ml PE Ø16 and 12 links)



Phase 2 - Bahamas St. Num. 50-48, 48-28 and 28-10 (240 ml PE Ø16 and 12 links)





**Main Road - Ext. Black Gravel Roundabout  
(67 ml PE Ø16 and 7 links)**



**Main Road - Ext. Black Gravel Roundabout  
(67 ml PE Ø16 and 7 links)**



**Main Road - Ext. Black Gravel Roundabout  
(67 ml PE Ø16 and 7 links)**



**Main Road - Ext. Black Gravel Roundabout  
(67 ml PE Ø16 and 7 links)**



**Main Road - From Sales Booth to Black  
Gravel Round. (870 ml PE Ø16 & 31 links)**



**Main Road - From Sales Booth to Black  
Gravel Round. (870 ml PE Ø16 & 31 links)**





**Main Road - From Sales Booth to Black Gravel Round. (870 ml PE Ø16 & 31 links)**



**Main Road - From Sales Booth to Black Gravel Round. (870 ml PE Ø16 & 31 links)**



**Main Road - From Sales Booth to Black Gravel Round. (870 ml PE Ø16 & 31 links)**



**Main Road - From Sales Booth to Black Gravel Round. (870 ml PE Ø16 & 31 links)**



**Main Road - From Sales Booth to Black Gravel Round. (870 ml PE Ø16 & 31 links)**



**Main Road - From Sales Booth to Black Gravel Round. (870 ml PE Ø16 & 31 links)**



Repair of the entrance fountain by replacing the pump and hydraulic body. The pump pinion was completely worn out due to vibrations transmitted to the hydraulic body. This caused hydraulic losses in the manifold, forcing the pump to operate outside its optimal range and accelerating the wear of both components. This problem persisted for an extended period until the fountain system finally stopped working.

The repair process involved replacing the following components:

1. **Hydraulic body, model SS636/01**, designed for the distribution and flow of water in ornamental fountain systems. Manufactured from high-strength, corrosion-resistant stainless steel, it is especially suitable for continuous operation in humid environments with the constant presence of water and chemical agents used in fountain treatment (chlorine, algaecides, pH regulators). The assembly acts as a hydraulic manifold, allowing for the orderly connection of the supply, return, and branch lines to the nozzles.
2. **Submersible motor-pump, model L4A-15T**, with a nominal power of 2 HP, specifically designed for water pumping in ornamental fountains and decorative hydraulic systems. Robust construction using corrosion-resistant materials, suitable for continuous operation under total immersion. Equipped with a sealed electric motor, with a protection rating suitable for prolonged submerged operation, guaranteeing reliability, low vibration levels, and quiet operation. Prepared for installation in valve boxes, fountain basins, or technical tanks, with easy access for maintenance, inspection, or replacement.





