

## 1. DESCRIPTION OF WORKS AND PHOTOGRAPHIC REPORT

Listed below are all the works carried out by **3RS GESTIÓN** for the Urban Solid Waste Collection Service, Street Cleaning and Maintenance of the Green Areas of the urban entity "Hacienda del Álamo Golf Resort", in **APRIL 2026**.

### 1.1. MUNICIPAL SOLID WASTE WORKS

Resolution regarding an act of vandalism involving a large amount of trash in a bin on Guinea Street. The EUC has been informed.



C/ Hungría



C/ Francia

At the request of the EUC and given the increased filling observed in some containers, the following is being installed:

- 1 Unit 1.100 liter residual waste container in Urb. Los Olivos, main street:



- 1 Unit 800 liter Residual Waste container in Urb. Oasis, Malaysia Street, 35:



- 2 selective containers (1 for blue cardboard and another for yellow packaging) of 3.200 liters in front of Urb. Oasis, Paseo Alameda:



## 1.2. STREET CLEANING WORKS

Cleaning and disinfection work on sidewalks, roads and drains of Hungary, France and Japan streets, following the clearing and chemical weeding work:



C/ Guinea



C/ Guinea



C/ Japón



C/ Japón

**Cleaning and disinfection of storm drain grates at the end of C/ Brasil (Phase 2)**



Before



After

Manual and mechanical cleaning work to remove soil debris caused by runoff during heavy rains on C/ Morella in Pueblo Español, including thorough cleaning of the grates and checking their operation



**Before**



**Before**



**After**



**After**

**Manual and mechanical cleaning work of soil erosion caused by runoff during heavy rains on sidewalks in Phase 6 Los Olivos**



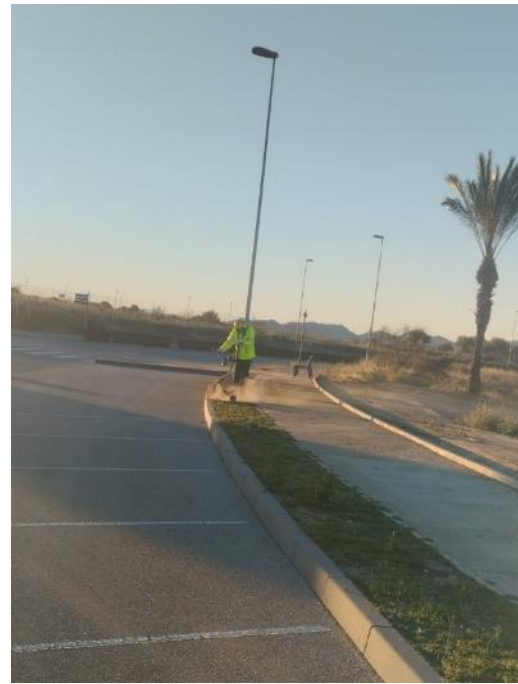
**Olivos A**



**Olivos B**

**1.3. GARDENING WORKS**

**Clearing and cleaning of the garden, the pine grove in front of the Hotel and sidewalks of Vial B, near homes in Phase 1**



**Clearing, trimming and garden cleaning Cortinas Verdes, around the Grava Negra roundabout**





Mowing the driveway lawn, the square garden, the driveway roundabout, the Phase 6 roundabout, and the Phase 1 roundabout:



**Phytosanitary treatments against weeds on sidewalks and curbs of Phases 4 and 5:**



**Phytosanitary treatments against weeds on sidewalks and driveway curbs, Phase 2, Phase 3, Green Curtains and Black Gravel Roundabout:**





**Phytosanitary treatments against weeds on sidewalks and curbs of Paseo Alameda (Phase 1) and Vial B**





**Phytosanitary treatments against weeds in the Pueblo Español park**



**Phytosanitary treatments against weeds in Cortinas Verde park next to the Grava Negra roundabout**



**Clearing and cleaning of the Rambla Mediterránea Park**



**Clearing and cleaning of the flowerbeds between Vial Principal and C/ Vistas al Green**



**Phytosanitary treatments against weeds in the flowerbeds between Vial Principal and C/ Vistas al Green**



**Phytosanitary treatments against weeds in the Rambla Mediterránea park**



**Clearing, hedge trimming and cleaning of the median of the Main Road**



**Trimming of hedges and ficus trees, clearing and cleaning of the right side of the Main Road**







**Trimming hedges, clearing and cleaning of the Olivos A and B gardens**





Weekly and monthly monitoring of temperature, pH and chlorine levels in facilities susceptible to Legionella proliferation (ornamental fountain, sprinkler irrigation and tanks)



Review of the irrigation network, opening manholes and checking controllers, solenoid valves, and emission points, detecting and repairing each of the incidents detected at the following locations:



**Water Inlet - Cleaning leaf accumulation in pump and floating area**



**Right entrance flowerbed - Cypresses (0.5 ml PE Ø20 and 2 links)**



**Cuadros Garden (next to Olivos mailboxes) - Rain Bird programmer replaced with Solem 1E**



**Cuadros Garden (next to Olivos mailboxes) - Rain Bird programmer replaced with Solem 1E**



**Cuadros Garden (next to Olivos mailboxes) - Replacement of broken diffuser**



**Pueblo Español - Refill drip line inlet (390 ml PE Ø16, 6 links)**



**Pueblo Español - Refill drip line inlet (390 ml PE Ø16, 6 links)**



**Pueblo Español - Refill drip line inlet (390 ml PE Ø16, 6 links)**



**Main road - Guardhouse next to lighting pole (Solem 1E programmer change)**



**Main road - Guardhouse next to lighting pole (Solem 1E programmer change)**



**Main vial - Garden Squares (1 solenoid valve 1", 1 ml PE Ø50, 1 T-connector)**



**Main vial - Garden Squares (1 solenoid valve 1", 1 ml PE Ø50, 1 T-connector)**



**Main vial - Root damage in front of Hotel (35 ml PE Ø32, 3 links)**



**Main vial - Root damage in front of Hotel (35 ml PE Ø32, 3 links)**



**Main vial - Root damage in front of Hotel (35 ml PE Ø32, 3 links)**



**Phase 2 - C/ Bahamas (programmer battery replacement)**



**Phase 2 - C/ Bahamas, 20 (3 ml PE Ø32, 2 links)**



**Phase 2 - C/ Bahamas, 20 (3 ml PE Ø32, 2 links)**



**Phase 2 - C/ Bahamas, 32 (Solem 1E programmer change)**



**Phase 2 - C/ Belgium 35-33 (replacement 33 ml PE Ø32, 2 links)**



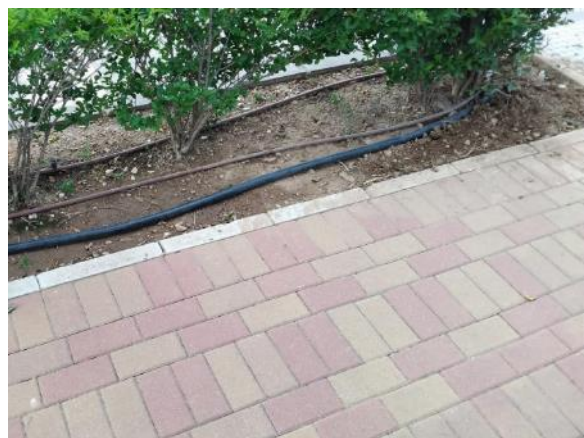
**Main road - Flowerbed next to the Clubhouse parking lot (replacement 58 ml PE Ø16, 4 connections)**



**Main road - Flowerbed next to the Clubhouse parking lot (replacement of Rain Bird programmer broken by Solem 4E)**



**Main road - Flowerbed next to the Clubhouse parking lot (replacement 58 ml PE Ø16, 4 connections)**



**Main road - Flowerbed next to the Clubhouse parking lot (replacement of Rain Bird programmer broken by Solem 4E)**



**Main vial - Garden squares entrance (1 ml PE Ø50, 1 link)**



**Main vial - Garden squares entrance (1 ml PE Ø50, 1 link)**



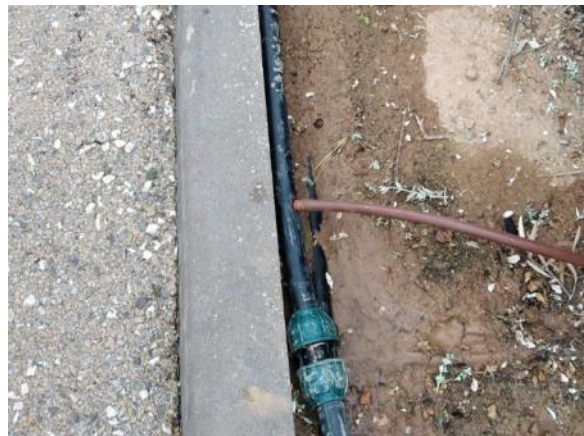
**Los Olivos - Back garden (timer battery replacement)**



**Los Olivos - Back garden (timer battery replacement)**



**Main vial - Garden squares (2 ml PE Ø32, 1 link and plug)**



**Main vial - Garden squares (2 ml PE Ø32, 1 link and plug)**



**Water Inlet - Cleaning leaf accumulation in pump and floating area**



**Paseo Alameda (Oasis) - End next to new buildings (2 ml PE Ø32, 1 link)**



**Paseo Alameda (Oasis) - End next to new buildings (50 ml PE Ø16, 1 link)**



**Paseo Alameda (Oasis) - End next to new buildings (50 ml PE Ø16, 1 link)**



**Garden behind the Security Guards - Drip line refill (180 ml PE Ø16, 44 drippers)**



**Garden behind the Security Guards - Drip line refill (180 ml PE Ø16, 44 drippers)**



**Garden behind the Security Guards - Drip line refill (180 ml PE Ø16, 44 drippers)**



**Garden behind the Security Guards - Drip line refill (180 ml PE Ø16, 44 drippers)**



**Main median road from Casa Club to roundabout Phase 1 - Replacement of drip irrigation line (240 ml PE Ø16, 16 connections)**



**Phase 6 Olive Trees - Front Garden (1 ml PE Ø32, 1 link)**